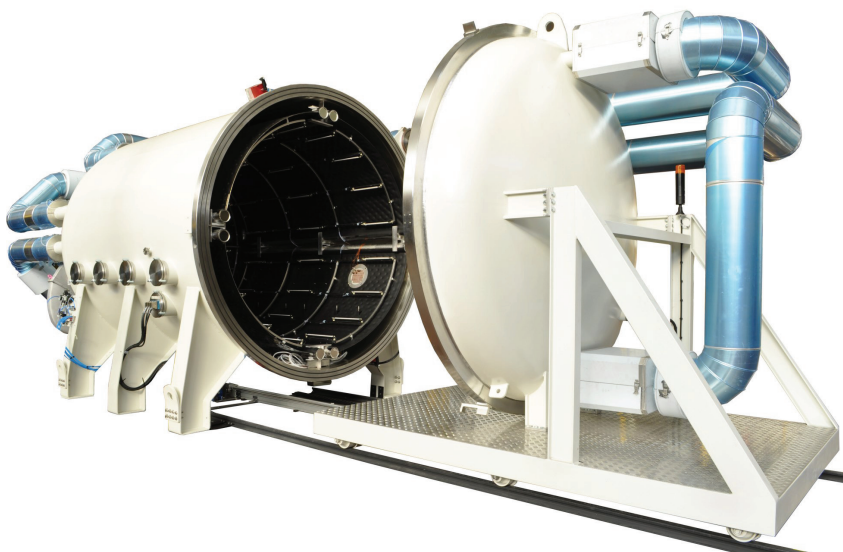
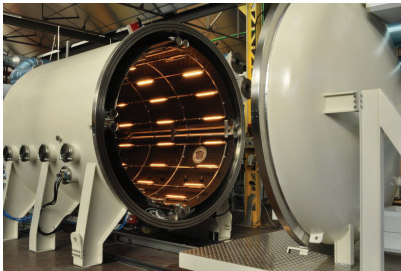


# TVC - Space Simulator 20m<sup>3</sup> (706ft<sup>3</sup>)

Space simulator 20m<sup>3</sup> (706ft<sup>3</sup>)  
1.10-7 mbar  
-135°C / +150°C  
IR Lighting

**Industries**  
Space and electronics

**Application**  
Simulation of space conditions



## Description

Unit composed of :

- A cylindrical vacuum chamber
- A door on trolley
- Door opening and closing system
- A machinery equipped with coolant system and vacuum system
- An electrical cabinet with power front-panel controls
- Supervision and control using SPIRALE Vs and command by touch screen

## Technical Data

Performances are given for :

- An ambient temperature between +15°C and +35°C
- A thermal load of 300 W

## Temperature on Shrouds

Temperature range : -135°C to +150°C

Cooling rate : average 2°C/min from +150°C to -135°C, without specimen

Heating rate : average 1,5°C/min from -135°C to +150°C, without specimen

Temperature stability : ± 2°C

Temperature homogeneity : ± 3°C to ± 5°C

## Vacuum

Vacuum range : From AP to 1.10-7 mbar

Pressure variation speed : From AP to 1.10-7

mbar in less than 8 hours, in an empty chamber, without the specimen, and at ambient temperature

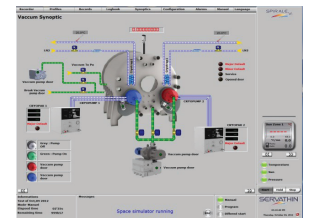
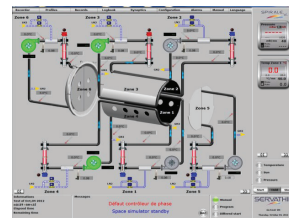
## Lighting IR :

2500 W/m<sup>2</sup>

## Test space dimensions :

Depth : 3000mm (118.1")

Diameter : Ø 2300mm (90.6" dia)



## Weiss Technik North America, Inc.

3881 N. Greenbrooke Dr. SE  
Grand Rapids, MI 49512 USA  
(616) 554-5020 • Fax: (616) 554-5021  
www.weiss-na.com  
24/7 Service Support Helpline: 1-800-361-6731  
Global Partner for Environmental Test Chambers